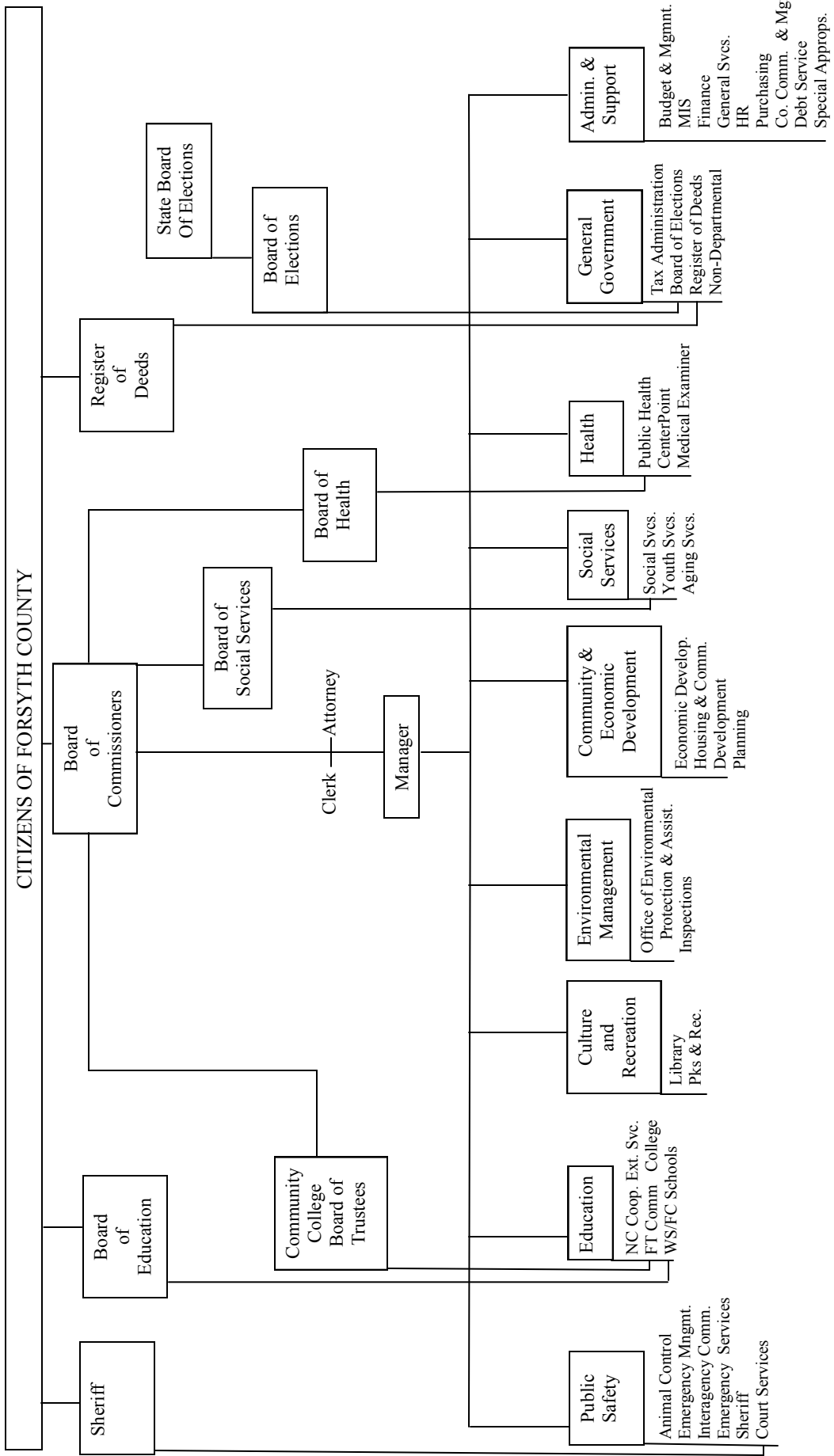


General Fund Table Of Contents

This section accounts for all financial resources except those required to be accounted for in another fund. It is the general operating fund of the County.

County Organization Chart	82
Forsyth County Personnel Positions By Service Areas	83
Public Safety Service Area Charts	87
Animal Control	92
Emergency Management.....	94
Interagency Communications	96
Sheriff	98
Emergency Services.....	104
Court Services	112
Environmental Management Service Area Charts.....	115
Office of Environmental Protection & Assistance	120
Inspections.....	122
Health Service Area Charts.....	125
Medical Examiner	130
CenterPoint Human Services	132
Public Health.....	134
Social Services Service Area Charts	137
Social Services	142
Aging Services.....	144
Youth Services.....	146
Education Service Area Charts	149
N.C. Cooperative Extension Service	154
Forsyth Technical Community College.....	156
Schools.....	158
Culture & Recreation Service Area Charts	161
Library.....	166
Parks & Recreation.....	168
Community & Economic Development Service Area Charts.....	173
Housing.....	178
Economic Development.....	180
Planning.....	182
Administration & Support Service Area Charts	185
Budget & Management	192
Management Information Services	194
Finance	196
General Services	198
Human Resources	200
Purchasing.....	202
Attorney	204
County Commissioners & Manager	206
Debt Service	208
General Government Service Area Charts	213
Board of Elections.....	218
Non-Departmental	220
Register of Deeds.....	222
Tax Administration	224
Special Appropriations.....	226

CITIZENS OF FORSYTH COUNTY



Personnel Positions By Service Areas - Forsyth County Employees

	FY 12-13 Prior Year <u>Actual</u>	FY 13-14 Current Year <u>Budget</u> <u>Estimate</u>		FY 14-15 Continuation <u>Request</u> <u>Recommend</u>	<u>Adopted</u>
<u>Public Safety</u>					
Animal Control					
Full	29	29	29	33	29
Part	0	1	1	1	1
Interagency Communications					
Full	2	2	2	2	2
Part	0	0	0	0	0
Sheriff					
Full	510	510	511	554	511
Part	21	21	21	21	21
Emergency Services					
Full	225	225	228	234	234
Part	18	18	13	13	13
Total Service Area - Full	766	766	770	823	776
Total Service Area - Part	39	40	35	35	35
<u>Environmental Management</u>					
Environmental Assistance & Protection					
Full	24	24	24	24	24
Part	0	0	0	0	0
Total Service Area - Full	24	24	24	24	24
Total Service Area - Part	0	0	0	0	0
<u>Health</u>					
Public Health					
Full	275	277	277	271	267
Part	8	9	9	7	7
Total Service Area - Full	275	277	277	271	267
Total Service Area - Part	8	9	9	7	7

Personnel Positions By Service Areas - Forsyth County Employees

	FY 12-13 Prior Year <u>Actual</u>	FY 13-14 Current Year <u>Budget</u> <u>Estimate</u>		FY 14-15 Continuation <u>Request</u> <u>Recommend</u>	<u>Adopted</u>
<u>Social Services</u>					
Social Services					
Full	449	449	474	476	474
Part	2	2	2	2	2
Youth Services					
Full	17	17	17	17	17
Part	6	6	6	6	6
Total Service Area - Full	466	466	491	493	491
Total Service Area - Part	8	8	8	8	8
<u>Education</u>					
N.C. Cooperative Extension Service					
Full	17	17	17	17	17
Part	2	2	2	2	2
Total Service Area - Full	17	17	17	17	17
Total Service Area - Part	2	2	2	2	2
<u>Culture & Recreation</u>					
Library					
Full	89	89	89	89	89
Part	33	33	33	33	33
Parks & Recreation					
Full	71	71	71	71	71
Part	117	117	117	120	120
Total Service Area - Full	160	160	160	160	160
Total Service Area - Part	150	150	150	153	153

Personnel Positions By Service Areas - Forsyth County Employees

	FY 12-13	FY 13-14		FY 14-15		<u>Adopted</u>
	Prior Year	Current Year		Continuation		
	<u>Actual</u>	<u>Budget</u>	<u>Estimate</u>	<u>Request</u>	<u>Recommend</u>	
<u>Community & Economic Development</u>						
Housing						
Full	5	5	5	5	5	5
Part	0	0	0	0	0	0
<hr/>						
Total Service Area - Full	5	5	5	5	5	5
Total Service Area - Part	0	0	0	0	0	0
<hr/>						
<u>Administration & Support</u>						
Budget & Management						
Full	6	6	5	6	6	6
Part	0	0	1	0	0	0
Management Information Services						
Full	55	53	42	42	42	42
Part	0	0	0	0	0	0
Finance						
Full	22	22	22	23	22	23
Part	0	0	0	0	0	0
General Services						
Full	131	132	140	140	140	140
Part	4	4	4	4	4	4
Human Resources						
Full	9	9	9	9	9	9
Part	0	0	0	0	0	0
Attorney						
Full	13	13	13	13	13	13
Part	0	0	0	0	0	0
County Commissioners & Manager						
Full	6	6	6	6	6	6
Part	1	1	1	1	1	1
<hr/>						
Total Service Area - Full	242	241	237	239	238	239
Total Service Area - Part	5	5	6	5	5	5
<hr/>						

Personnel Positions By Service Areas - Forsyth County Employees

	FY 12-13	FY 13-14		FY 14-15		<u>Adopted</u>
	Prior Year	Current Year		Continuation		
	<u>Actual</u>	<u>Budget</u>	<u>Estimate</u>	<u>Request</u>	<u>Recommend</u>	
<u>General Government</u>						
Board of Elections						
Full	7	7	8	8	8	8
Part	3	2	0	0	0	0
Register of Deeds						
Full	22	22	19	19	19	19
Part	1	1	3	3	3	3
Tax Administration						
Full	76	75	75	74	74	74
Part	10	10	10	1	1	1
<hr/>						
Total Service Area - Full	105	104	102	101	101	101
Total Service Area - Part	14	13	13	4	4	4
<hr/>						
Grand Total						
Full-Time Positions	2,060	2,060	2,083	2,133	2,079	2,082
Part-Time Positions	226	227	223	214	214	214